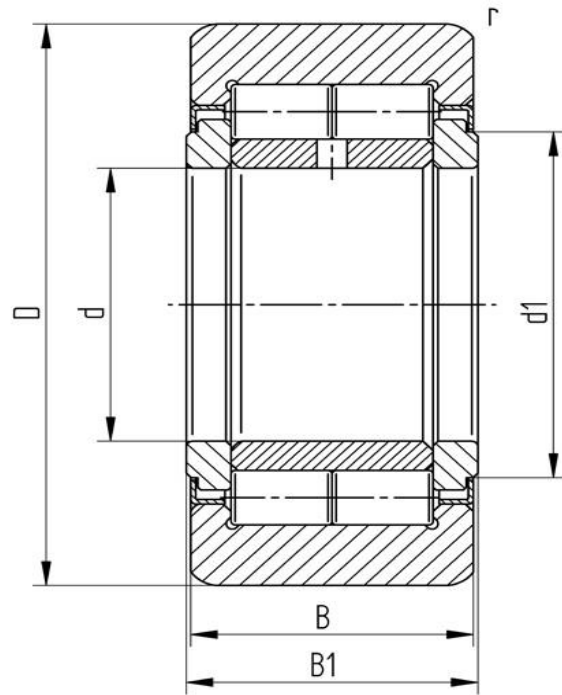


Data sheet

Support roller NUTR 15 (crowned, with axial guidance, labyrinth seal)

Designation	NUTR 15
Type	crowned
D [mm]	35
d [mm]	15
d1 [mm max.]	20
B1 [mm]	19
B [mm]	18
r [mm]	0,6
r1 [mm]	0,3
Dynamic load Crw[N]	16000
Static load	18300
Speed limit [min-1]	6500



Every specification has been edited and verified carefully. STI Bearings GmbH assumes no liability for potential errors or incompleteness. Technical modifications are subject of changes.
© 2020 by STI Bearings GmbH
Reproduction, even excerpts, only with our approval.